

ACCUDROP™ DROP TESTERS

Complies with ISTA, ASTM, ISO, MIL STD and other internationally recognized test standards.

Precision drop testing at an affordable price. We call it the ACCUDROP™ Series drop tester. This series of drop testers represent the ultimate dimension in product and package performance testing and are designed to meet wide variety of global testing needs. With 3 models to choose from, you no longer have to compromise on the features you want or need.

DROP WITH CONFIDENCE

Model AD-160A is 1 of 3 models in the ACCUDROP™ Series. It helps determine the ruggedness of packages and the effectiveness of their interior cushioning when exposed to impact during material handling. The effects of dropping are easily duplicated in your laboratory using the controlled and precise flat, corner, and edge drop tests.

MODEL AD-160A ACCUDROP™ FEATURES

ACME Screw Drive System with Single Drop Arm Action

- 160 lbs (73 kg) maximum payload capacity.
- 32" (813 mm) maximum package size. Unlimited width or height.
- 30"W x 32"D (762 x 813 mm) impact surface made of steel.
- 15-72 in (381-1829 mm) adjustable drop height.
- Drop height indicator scale allows drop height to be read from floor level.
- Exclusive Hand-Held Operator Control with LCD digital readout:
 - Selectable display units of inches or millimeters.
 - 2 button drop release sequence to ensure safe operation.
 - Auto positioning function with memory.
 - Drop positioning control.
- Analog counter tracks the number of drops performed for maintenance.
- Sonar alert during drop arm release sequence.
- Package Holding Fixture holds package in correct orientation prior to drop.

DROP
With
CONFIDENCE



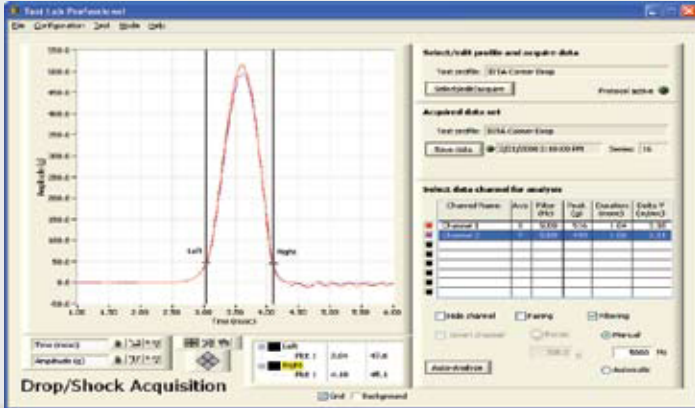
MODEL AD-160A MACHINE FUNCTIONAL DESCRIPTION

- Package Support Arm:
Holds your package. A pneumatic cylinder accelerates the support arm downward and guides the arm laterally out from under the falling package.
- Hand-Held Operator Control:
Lowers or raises the package support arm to a desired height, returns the package support arm to the "up" position; records the current height and automatically returns to the previous set height; drops the package.

Package Support Arm



Capturing Testing Data



AD-160A ACCUDROP™ OPTIONS

- Extended drop height
- Enlarged base plate for larger packages
- Wooden base plate for MIL STD 810 testing
- International power source
- CE Compliance
- Safety Fence

TLP DATA ACQUISITION SYSTEM: DROP & SHOCK

- Complete Windows-based software
- Easy Drop & Shock test acquisition and analysis
- 8-ch (PCI Board) or 4-ch (USB Drive) data capture capabilities
- Peak G, Duration, and Change-in-Velocity analysis
- Max. rate 250K samples/sec (1 ch.); min. rate 3K S/sec (8 ch.)
- Resolves 0.1msec HS pulse on 5 channels simultaneously
- 16 bit A/D Resolution; 0.0015% of full scale input
- Adjustable ±10v, ±5v, ±1V, ±0.2v input voltage
- Bi-polar, selectable per axis automatic triggering or manual triggering
- Data Capture Window with automatic or user-specified duration
- None, automatic or user-specified Low Pass Data Filtering

STANDARD ACCUDROP™ SERIES MODEL COMPARISON

AD-160A



AD-125



AD-500



Drive System	ACME Screw Drive	Electric Hoist	Hydraulic Hoist
Payload Capacity	160 lbs / 73 kg	125 lbs / 57 kg	500 lbs / 227 kg
Drop Height	15-72 in / 381-1829 mm	8-84 in / 203-2124 mm	2-30 in / 51-762 mm
Package Size	32 in / 813 mm (D)	36x26 in / 914x660 mm (WxD)	30 in / 762 mm (D)
Impact Zone	30x32 in / 762x813 mm (WxD)	36x36 in / 914x914 mm (WxD)	48x30 in / 1219x762 mm (WxD)
Utility Requirement	120V/1PH/50 or 60Hz 90 PSI / 7kg/cm ² , 10 Amp	120V/1PH/50 or 60Hz, 10 Amp	120V/220V/230V/1PH/60Hz or 380V/3PH/50Hz, 10 Amp
Machine Weight	1,000 lbs / 454 kg	1,000 lbs / 454 kg	2,000 lbs / 907 kg
Machine Dimensions	102x30x52 in/2.6x0.8x1.3 m (HxWxD)	108x60x36 in/2.7x1.5x0.9 m (HxWxD)	78x48x44 in/2x1.2x1.1 m (HxWxD)

*Please consult us for non-standard specifications.