

ACCUDROP™ DROP TESTERS

Complies with ISTA, ASTM, ISO, MIL STD and other internationally recognized test standards.

Precision drop testing at an affordable price. We call it the ACCUDROP™ Series drop tester. This series of drop testers represent the ultimate dimension in product and package performance testing and are designed to meet wide variety of global testing needs. With 3 models to choose from, you no longer have to compromise on the features you want or need.

DROP WITH CONFIDENCE

Model AD-500 is 1 of 3 models in the ACCUDROP™ Series. It helps determine the ruggedness of packages and the effectiveness of their interior cushioning when exposed to impact during material handling. The effects of dropping are easily duplicated in your laboratory using the controlled and precise flat, corner, and edge drop tests.

MODEL AD-500 ACCUDROP™ FEATURES

Hydraulic Lifting System with Three-Tine Vertical Drop Action

- 500 lbs (227 kg) maximum payload capacity.
- 30" D (762 mm) maximum package size. Unlimited width or height.
- 48"W x 30"D (1219 x 762 mm) impact surface made of steel.
- 2"- 30" (51-762 mm) adjustable drop height.
- Drop height indicator scale allows drop height to be read from floor level.
- Valve lever raises or lowers the support carriage in an appropriate position.
- Hand held pendant for initiating the drop.
- Stroke spacer for drop tests 12" and above for optimum drops.
- Operator Safety Guard for preventing possible injury.
- Package holding fixture holds package in correct orientation prior to drop.

MODEL AD-500 MACHINE FUNCTIONAL DESCRIPTION

- Three-Tine Support Carriage:
Loads your package (use Package Holding Fixture for Edge or Corner drops); accelerates downward, away from the falling package and settles into a recessed area in the base plate.
- Hydraulic Power Supply:
Hydraulically raises the test package to your determined drop height.
- Valve Lever and Hand-Held Pendant Switch:
The valve lever raises or lowers the support carriage to the appropriate height.
The hand-held pendant switch initiates the drop.

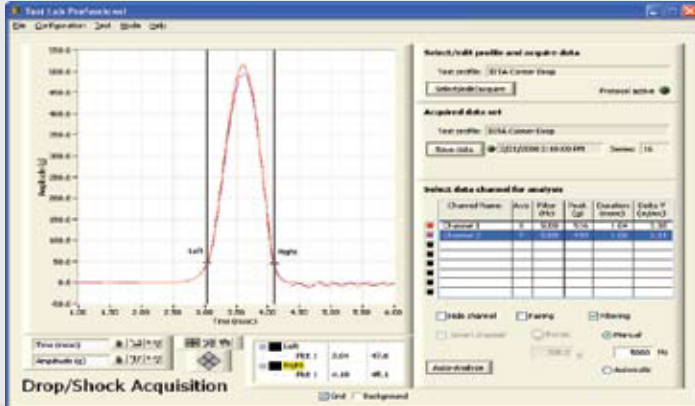
DROP
With
CONFIDENCE



Three-Tine Support Carriage



Capturing Testing Data



AD-500 ACCUDROP™ OPTIONS

- Extended drop height
- Enlarged base plate for larger packages
- Extended support tines for wider packages
- International power requirements
- Wooden base plate for MIL STD 810 testing
- CE Compliance
- Safety Fence

TLP DATA ACQUISITION SYSTEM: DROP & SHOCK

- Complete Windows-based software
- Easy Drop & Shock test acquisition and analysis
- 8-ch (PCI Board) or 4-ch (USB Drive) data capture capabilities
- Peak G, Duration, and Change-in-Velocity analysis
- Max. rate 250K samples/sec (1 ch.); min. rate 3K S/sec (8 ch.)
- Resolves 0.1msec HS pulse on 5 channels simultaneously
- 16 bit A/D Resolution; 0.0015% of full scale input
- Adjustable $\pm 10v$, $\pm 5v$, $\pm 1v$, $\pm 0.2v$ input voltage
- Bi-polar, selectable per axis automatic triggering or manual triggering
- Data Capture Window with automatic or user-specified duration
- None, automatic or user-specified Low Pass Data Filtering

STANDARD ACCUDROP™ SERIES MODEL COMPARISON

AD-500



AD-160A



AD-125



Drive System	Hydraulic Hoist	ACME Screw Drive	Electric Hoist
Payload Capacity	500 lbs / 227 kg	160 lbs / 73 kg	125 lbs / 57 kg
Drop Height	2-30 in / 51-762 mm	15-72 in / 381-1829 mm	8-84 in / 203-2124 mm
Package Size	30 in / 762 mm (D)	32 in / 813 mm (D)	36x26 in / 914x660 mm (WxD)
Impact Zone	48x30 in / 1219x762 mm (WxD)	30x32 in / 762x813 mm (WxD)	36x36 in / 914x914 mm (WxD)
Utility Requirement	120V/220V/230V/1PH/60Hz or 380V/3PH/50Hz, 10 Amp	120V/1PH/50 or 60Hz 90 PSI / 7kg/cm ² , 10 Amp	120V/1PH/50 or 60Hz, 10 Amp
Machine Weight	2,000 lbs / 907 kg	1,000 lbs / 454 kg	1,000 lbs / 454 kg
Machine Dimensions	78x48x44 in/2x1.2x1.1 m (HxWxD)	102x30x52 in/2.6x0.8x1.3 m (HxWxD)	108x60x36 in/2.7x1.5x0.9 m (HxWxD)

*Please consult us for non-standard specifications.

