

MAXDROP™ DROP TESTERS

Complies with ISTA, ASTM, ISO, MIL STD and other internationally recognized test standards.

Introducing the MAXDROP SERIES. Extra large free-fall drop testing is now available. Designed to provide repeatable drop testing on the largest test products and packages ever. You won't have to settle for hooks and chains any longer!

DROP WITH CONFIDENCE

The MAXDROP SERIES were designed with new testing demands from our customers in mind, plus the convenience you've come to expect in a drop tester. Here's why you can drop with confidence:

- Flatness of drop maintained throughout entire support carriage
- Repeatability and reproducibility minimize test variability
- Fast drive system for high test output

DROP
With
CONFIDENCE

MAXDROP™ FEATURES

Lead Screw Drive System with Enclosed Four-Tine Vertical Drop Action

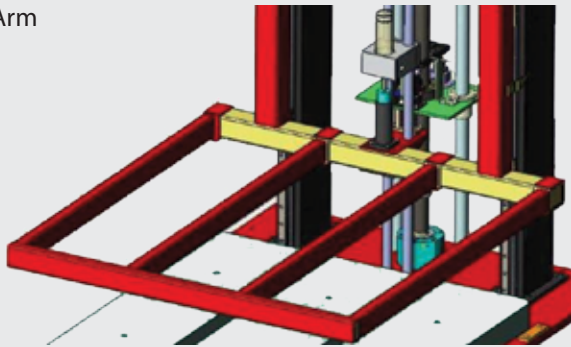
- Two models to choose from (300kg or 600kg).
- Massive enclosed four-tine support carriage.
- Lead Screw Drive System.
- Accelerated drop thrusts carriage ahead of payload.
- Remote control panel can be positioned by user for convenience.
- Easy operation and maintenance.
- Flat, edge and corner drops.
- Available in any international power configuration.
- Emergency stop for quick shut down.
- Package holding fixture holds package in correct orientation prior to drop.

MAXDROP SERIES MACHINE FUNCTIONAL DESCRIPTION

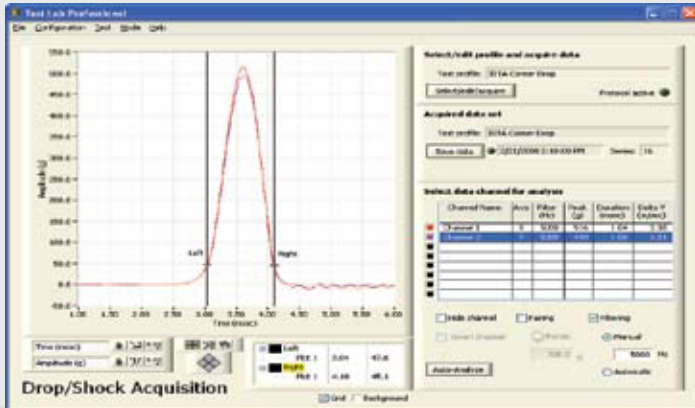
- Four-Tine Support Carriage:
Loads your package (use Package Holding Fixture for Edge or Corner drops); thrusts downward ahead of the product ensuring an unobstructed drop.
- Mechanical Screw and Motor:
The carriage travels along a vertical tube and is held at the desired height by a motor and mechanical screw.
- Control Panel:
The mechanical screw motor is operated by the control panel attached to the machine.



Enclosed Four-Tine Support Arm



Capturing Testing Data



MAXDROP™ OPTIONS

- Extended drop height
- Enlarged base plate for larger packages
- Extended support tines for wider packages
- International power requirements
- Wooden base plate for MIL STD 810 testing
- CE Compliance
- Safety Fence

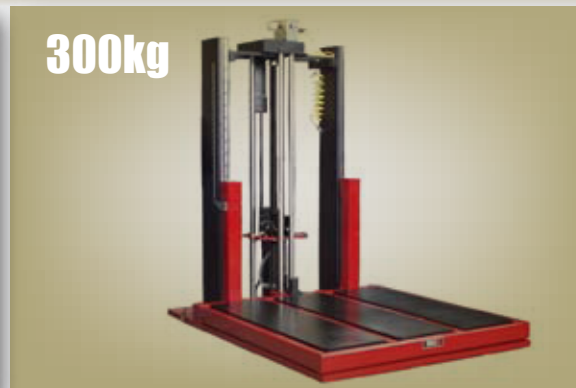
TLP DATA ACQUISITION SYSTEM: DROP & SHOCK

- Complete Windows-based software
- Easy Drop & Shock test acquisition and analysis
- 8-ch (PCI Board) or 4-ch (USB Drive) data capture capabilities
- Peak G, Duration, and Change-in-Velocity analysis
- Max. rate 250K samples/sec (1 ch.); min. rate 3K S/sec (8 ch.)
- Resolves 0.1msec HS pulse on 5 channels simultaneously
- 16 bit A/D Resolution; 0.0015% of full scale input
- Adjustable $\pm 10v$, $\pm 5v$, $\pm 1v$, $\pm 0.2v$ input voltage
- Bi-polar, selectable per axis automatic triggering or manual triggering
- Data Capture Window with automatic or user-specified duration
- None, automatic or user-specified Low Pass Data Filtering

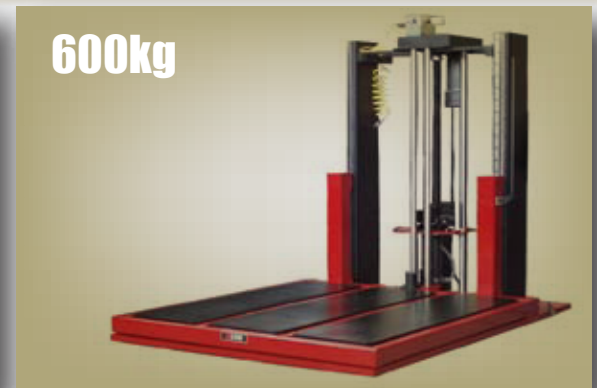
MAXDROP™ SERIES MODEL COMPARISON



Massive Base Plate



300kg



600kg

| | | |
|----------------------------|--|---|
| Drive System | Lead Screw Drive System | Lead Screw Drive System |
| Payload Capacity | 661 lbs / 300 kg | 1323 lbs / 600 kg |
| Drop Height | 2-60 in / 51-1524 mm | 2-35 in / 51-889 mm |
| Support Arm Size | 48 x 48 in / 1219 x 1219 mm (WxD) | 59 x 59 in / 1499 x 1499 mm (WxD) |
| Impact Zone | 43 x 45 in / 1092 x 1143 mm (WxD) | 59 x 59 in / 1499 x 1499 mm (WxD) |
| Utility Requirement | 460/3ph/60 Hz, 15Amp, 90 PSI | 460/3ph/60Hz 15Amp, 90 PSI |
| Machine Weight | 4620 lbs / 2096 kg | 5720 lbs / 2595 kg |
| Machine Dimensions | 101 x 48 x 76 in / 2566 x 1067 x 1854 mm (HxWxD) | 76 x 59 x 87 in / 1930 x 1499 x 2210 mm (HxWxD) |

*Please consult us for non-standard specifications.