

## ACCUDROP™ DROP TESTERS

Complies with ISTA, ASTM, ISO, MIL STD and other internationally recognized test standards.

Precision drop testing at an affordable price. We call it the ACCUDROP™ Series drop tester. This series of drop testers represent the ultimate dimension in product and package performance testing and are designed to meet wide variety of global testing needs. With 3 models to choose from, you no longer have to compromise on the features you want or need.

### DROP WITH CONFIDENCE

Model AD-125 is 1 of 3 models in the ACCUDROP™ Series. It helps determine the ruggedness of packages and the effectiveness of their interior cushioning when exposed to impact during material handling. The effects of dropping are easily duplicated in your laboratory using the controlled and precise flat, corner, and edge drop tests.

### MODEL AD-125 ACCUDROP™ FEATURES

#### Electric Hoist Lifting Mechanism with Dual Leaf Drop Action

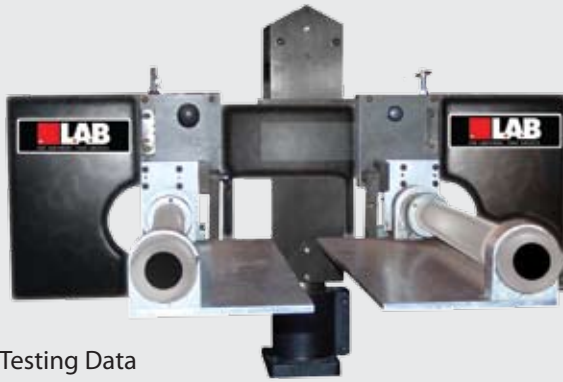
- 125 lbs (57 kg) maximum payload capacity.
- 36"W x 26"D (914 x 660 mm) maximum package size. Unlimited height.
- 36"W x 26"D (914 x 660 mm) impact surface made of steel.
- 8"- 84" (203-2134 mm) adjustable drop height.
- Drop height indicator scale allows drop height to be read from floor level.
- Hand held pendant for raising and lowering drop arm release.
- Drop release using foot actuated pedal.
- Reset Disable Switch for preventing package interference on low drops.
- Package Holding Fixture holds package in correct orientation prior to drop.

### MODEL AD-125 MACHINE FUNCTIONAL DESCRIPTION

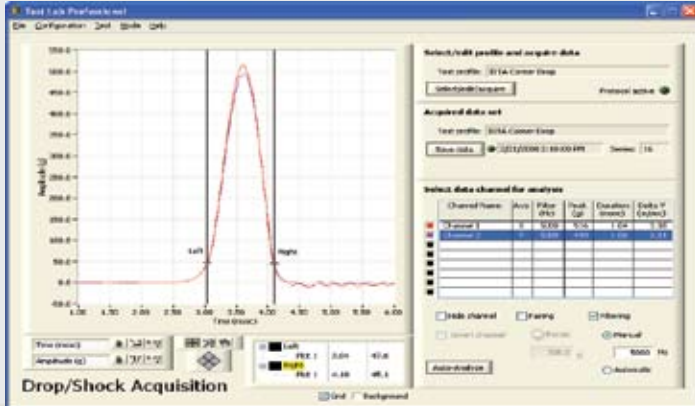
- Test Platform:  
Holds your package (use Package Holding Fixture for Edge or Corner drops); adjusts to meet your required package width.
- Hoist Control:  
Positions the drop leaves to meet your required test height using Hand-Held Pendant.
- Release Mechanism:  
Provides a guarded Foot Switch to activate the platform release. After a drop, the same pedal is used to reset drop leave to drop-ready mode.



Dual Drop Leaf Release Mechanism



Capturing Testing Data



## AD-125 ACCUDROP™ OPTIONS

- Extended drop height
- Enlarged base plate for larger packages
- Extended drop arm for wider packages
- Wooden base plate for MIL STD 810 testing
- International power source
- CE Compliance
- Safety Fence

## TLP DATA ACQUISITION SYSTEM: DROP & SHOCK

- Complete Windows-based software
- Easy Drop & Shock test acquisition and analysis
- 8-ch (PCI Board) or 4-ch (USB Drive) data capture capabilities
- Peak G, Duration, and Change-in-Velocity analysis
- Max. rate 250K samples/sec (1 ch.); min. rate 3K S/sec (8 ch.)
- Resolves 0.1msec HS pulse on 5 channels simultaneously
- 16 bit A/D Resolution; 0.0015% of full scale input
- Adjustable ±10v, ±5v, ±1V, ±0.2v input voltage
- Bi-polar, selectable per axis automatic triggering or manual triggering
- Data Capture Window with automatic or user-specified duration
- None, automatic or user-specified Low Pass Data Filtering

## STANDARD ACCUDROP™ SERIES MODEL COMPARISON



|                            |                                    |
|----------------------------|------------------------------------|
| <b>AD-125</b>              |                                    |
| <b>Drive System</b>        | Electric Hoist                     |
| <b>Payload Capacity</b>    | 125 lbs / 57 kg                    |
| <b>Drop Height</b>         | 8-84 in / 203-2124 mm              |
| <b>Package Size</b>        | 36x26 in / 914x660 mm (WxD)        |
| <b>Impact Zone</b>         | 36x36 in / 914x914 mm (WxD)        |
| <b>Utility Requirement</b> | 120V/1PH/50 or 60Hz, 10 Amp        |
| <b>Machine Weight</b>      | 1,000 lbs / 454 kg                 |
| <b>Machine Dimensions</b>  | 108x60x36 in/2.7x1.5x0.9 m (HxWxD) |

|                            |  |
|----------------------------|--|
| <b>AD-160A</b>             |  |
| <b>Drive System</b>        | ACME Screw Drive   |
| <b>Payload Capacity</b>    | 160 lbs / 73 kg  |
| <b>Drop Height</b>         | 15-72 in / 381-1829 mm                                       |
| <b>Package Size</b>        | 32 in / 813 mm (D)   |
| <b>Impact Zone</b>         | 30x32 in / 762x813 mm (WxD)                                  |
| <b>Utility Requirement</b> | 120V/1PH/50 or 60Hz<br>90 PSI / 7kg/cm <sup>2</sup> , 10 Amp |
| <b>Machine Weight</b>      | 1,000 lbs / 454 kg   |
| <b>Machine Dimensions</b>  | 102x30x52 in/2.6x0.8x1.3 m (HxWxD)                           |

|                            |   |
|----------------------------|---|
| <b>AD-500</b>              |   |
| <b>Drive System</b>        | Hydraulic Hoist                                     |
| <b>Payload Capacity</b>    | 500 lbs / 227 kg                                    |
| <b>Drop Height</b>         | 2-30 in / 51-762 mm                                 |
| <b>Package Size</b>        | 30 in / 762 mm (D)                                  |
| <b>Impact Zone</b>         | 48x30 in / 1219x762 mm (WxD)                        |
| <b>Utility Requirement</b> | 120V/220V/230V/1PH/60Hz<br>or 380V/3PH/50Hz, 10 Amp |
| <b>Machine Weight</b>      | 2,000 lbs / 907 kg                                  |
| <b>Machine Dimensions</b>  | 78x48x44 in/2x1.2x1.1 m (HxWxD)                     |

\*Please consult us for non-standard specifications.

