

ACCUDROP™ DROP TESTERS

Complies with ISTA, ASTM, ISO, MIL STD and other internationally recognized test standards.

Precision drop testing at an affordable price. We call it the ACCUDROP™ Series drop tester. This series of drop testers represent the ultimate dimension in product and package performance testing and are designed to meet wide variety of global testing needs. With 3 models to choose from, you no longer have to compromise on the features you want or need.

DROP WITH CONFIDENCE

Model AD-500 is 1 of 3 models in the ACCUDROP™ Series. It helps determine the ruggedness of packages and the effectiveness of their interior cushioning when exposed to impact during material handling. The effects of dropping are easily duplicated in your laboratory using the controlled and precise flat, corner, and edge drop tests.

MODEL AD-500 ACCUDROP™ FEATURES

Hydraulic Lifting System with Three-Tine Vertical Drop Action

- 500 lbs (227 kg) maximum payload capacity.
- 30" D (762 mm) maximum package size. Unlimited width or height.
- 48"W x 30"D (1219 x 762 mm) impact surface made of steel.
- 2"- 30" (51-762 mm) adjustable drop height.
- Drop height indicator scale allows drop height to be read from floor level.
- Valve lever raises or lowers the support carriage in an appropriate position.
- Hand held pendant for initiating the drop.
- Stroke spacer for drop tests 12" and above for optimum drops.
- Operator Safety Guard for preventing possible injury.
- Package holding fixture holds package in correct orientation prior to drop.

MODEL AD-500 MACHINE FUNCTIONAL DESCRIPTION

- Three-Tine Support Carriage:
Loads your package (use Package Holding Fixture for Edge or Corner drops); accelerates downward, away from the falling package and settles into a recessed area in the base plate.
- Hydraulic Power Supply:
Hydraulically raises the test package to your determined drop height.
- Valve Lever and Hand-Held Pendant Switch:
The valve lever raises or lowers the support carriage to the appropriate height.
The hand-held pendant switch initiates the drop.

DROP
With
CONFIDENCE

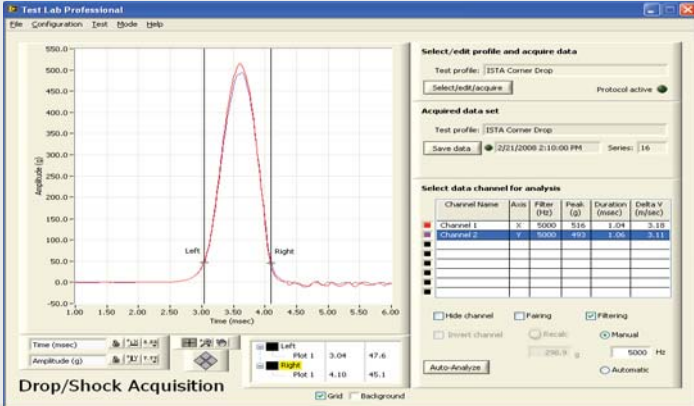


ACCUDROP

Three-Tine Support Carriage



Capturing Testing Data



AD-500 ACCUDROP™ OPTIONS

- Extended drop height
- Enlarged base plate for larger packages
- Extended support tines for wider packages
- International power requirements
- Wooden base plate for MIL STD 810 testing
- CE Compliance
- Safety Fence

TLP DATA ACQUISITION SYSTEM: DROP & SHOCK

- Complete Windows-based software
- Easy Drop & Shock test acquisition and analysis
- 8-ch (PCI Board) or 4-ch (USB Drive) data capture capabilities
- Peak G, Duration, and Change-in-Velocity analysis
- Max. rate 250K samples/sec (1 ch.); min. rate 3K S/sec (8 ch.)
- Resolves 0.1msec HS pulse on 5 channels simultaneously
- 16 bit A/D Resolution; 0.0015% of full scale input
- Adjustable $\pm 10v$, $\pm 5v$, $\pm 1v$, $\pm 0.2v$ input voltage
- Bi-polar, selectable per axis automatic triggering or manual triggering
- Data Capture Window with automatic or user-specified duration
- None, automatic or user-specified Low Pass Data Filtering

STANDARD ACCUDROP™ SERIES MODEL COMPARISON



AD-500	
Drive System	Hydraulic Hoist
Payload Capacity	500 lbs / 227 kg
Drop Height	2-30 in / 51-762 mm
Package Size	30 in / 762 mm (D)
Impact Zone	48x30 in / 1219x762 mm (WxD)
Utility Requirement	208V/230V/3PH/60Hz or 380V/3PH/50Hz, 10 Amp
Machine Weight	2,000 lbs / 907 kg
Machine Dimensions	78x48x44 in/2x1.2x1.1 m (HxWxD)

AD-160A	
Drive System	ACME Screw Drive
Payload Capacity	160 lbs / 73 kg
Drop Height	15-72 in / 381-1829 mm
Package Size	32 in / 813 mm (D)
Impact Zone	30x32 in / 762x813 mm (WxD)
Utility Requirement	120V/1PH/50 or 60Hz 90 PSI / 7kg/cm ² , 10 Amp
Machine Weight	1,000 lbs / 454 kg
Machine Dimensions	102x30x52 in/2.6x0.8x1.3 m (HxWxD)

AD-125	
Drive System	Electric Hoist
Payload Capacity	125 lbs / 57 kg
Drop Height	8-84 in / 203-2124 mm
Package Size	36x26 in / 914x660 mm (WxD)
Impact Zone	36x36 in / 914x914 mm (WxD)
Utility Requirement	120V/1PH/50 or 60Hz, 10 Amp
Machine Weight	1,000 lbs / 454 kg
Machine Dimensions	108x60x36 in/2.7x1.5x0.9 m (HxWxD)

*Please consult us for non-standard specifications.